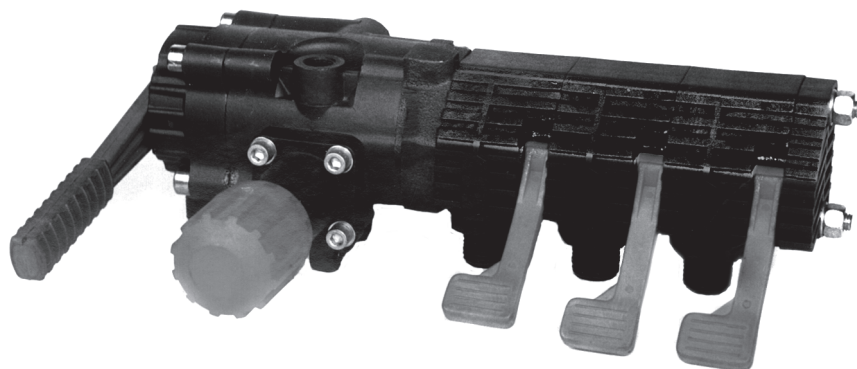




SB-3 CONTROL UNIT

Operating instructions and Specifications

The SB-3 is a remote-mounted control valve that provides 3-section spray boom control and a master shut-off valve. It has 3/4" hose barb inlet and 1/2" hose barb outlet ports. Optional 3/4" hose barb outlet ports are also available. (Order Part # 1406.26.) Qty 3



This control unit is intended for use with RO-70, RO-110, RO-130 or similar pumps.

SPECIFICATIONS

Maximum Flow	35 GPM
Maximum Pressure	300 PSI
Hose Barb Ports	
In	3/4"
Out	1/2"
By-pass	1"
Dimensions	L-13" x W-10" x H-9"
Weight	6 lbs.

OPERATING INSTRUCTIONS

The SB-3 control Unit has a manual dump valve lever, pressure control knob, glycerin-filled pressure gauge and three on-off discharge ports.

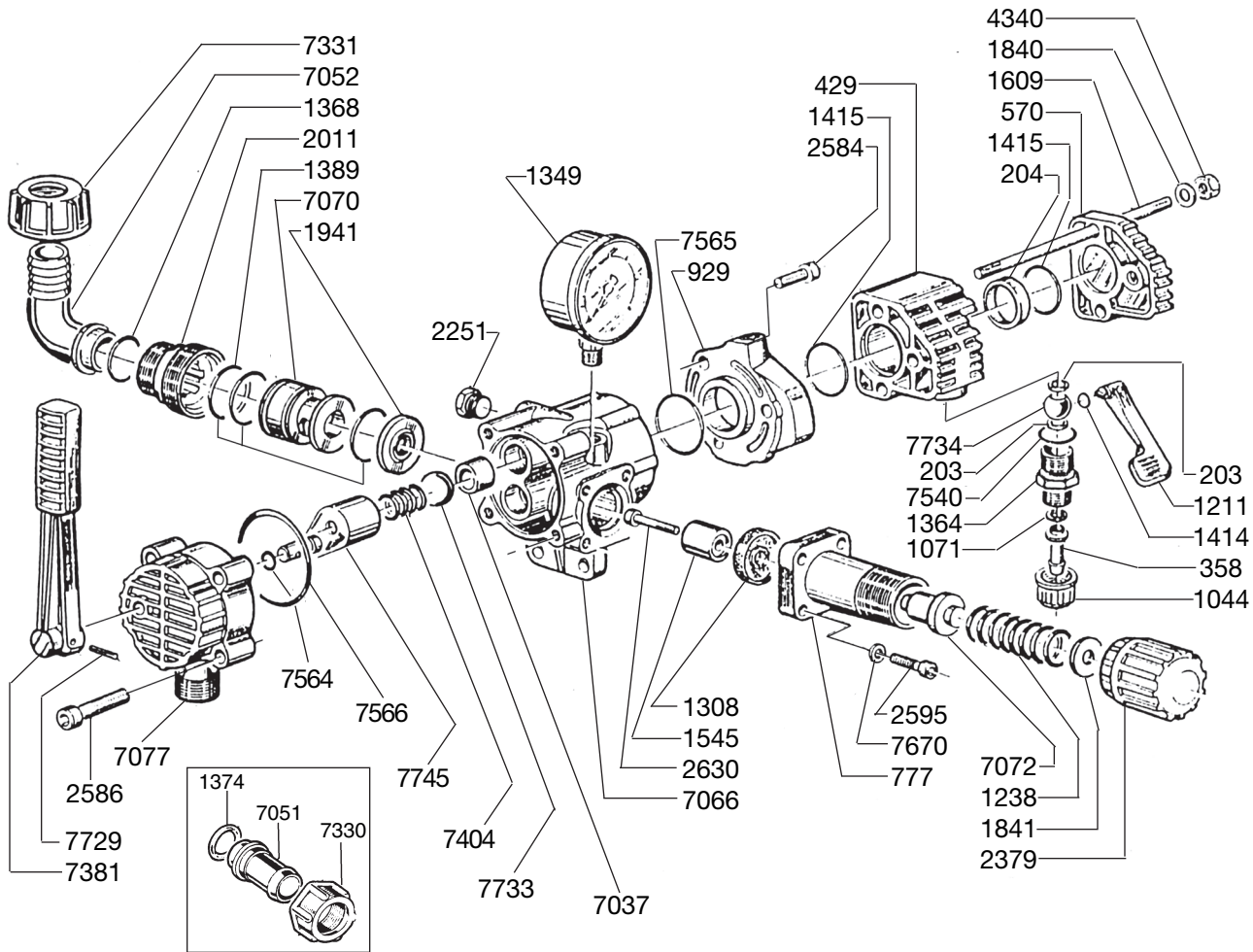
- 1 Before operating or re-operating pump, move the selection lever (Ref. #7381) to the up (or OFF) position, so the pump will start at zero pressure. **FAILURE TO DO SO WILL VOID PUMP WARRANTY.**
- 2 Turn pressure adjustment knob (Ref. #2379) counter-clockwise to relieve spring tension.
NOTE - Step 2 applies only to initial start-up and is not necessary in daily operation.
- 3 Start unit and let run until air is evacuated from system, when only liquid is expelled from the by-pass line.
- 4 Move selector lever #7381 to the ON position, move boom outlet handles (Ref. #1211) to the ON position and turn the pressure adjustment knob #2379 clockwise until desired operating pressure is achieved.

NOTE - Protect pump from freezing. If freezing conditions exist, flush pump with a 50/50 mixture of anti-freeze and water.

UDOR U.S.A., INC.

500 Apollo Drive
Lino Lakes, MN 55014
TEL. (651) 785-0666
FAX. (800) 732-2670
www.udorusa.com

SB-3 Control Unit - Exploded View Diagram and Parts List



REF#	PART#	DESCRIPTION	QTY	REF#	PART#	DESCRIPTION	QTY
*203	0023.03	Seal	6	2251	1603.02	Plug	1
204	0023.04	Guide	3	2379	1801.17	Adjustment Knob	1
358	0202.19	Brass Hose Barb	3	2584	1805.06	Bolt	3
429	0204.08	Valve Body	3	2586	1805.13	Bolt	4
570	0208.35	End Plate	1	2595	1805.19	Bolt	4
777	0252.05	Spring Body	1	*2630	1810.01	Stainless Steel Bolt	1
929	0518.01	Flange	1	4340	0303.01	Nut	2
1044	0604.41	Plastic Barb Nut	3	*7037	0113.13	Ball Seat	2
1071	0605.05	Rubber Gasket	3	7051	0202.69	3/4" Brass Barb	1
1211	0803.16	Lever	3	7052	0202.75	By-pass Hose Barb	1
1238	0901.47	Spring	1	7066	0204.07	R.V. Body	1
1308	0903.42	Viton R.V. Diaphragm	1	7070	0205.14	Cylinder	1
1349	GG-350	Gauge	1	7072	0205.16	Spring Guide	1
1364	1001.09	Nipple	3	7077	0208.39	Selector Body	1
1368	1101.04	O-Ring	1	7330	0604.29	Barb Nut	1
1374	1101.12	O-Ring	1	7331	0604.36	Nut	1
1389	1101.41	O-Ring	3	7381	0803.13	Lever	1
1414	1106.09	O-Ring	3	7404	0901.44	Ball Spring	1
1415	1101.77	O-Ring	3	7540	1101.04	O-Ring	3
1545	1204.19	R.V. Poppet	1	*7564	1101.65	O-Ring	1
1609	1206.27	Stud	2	*7565	1101.66	O-Ring	1
1840	1403.10	Washer	2	*7566	1101.67	O-Ring	1
1841	1403.06	Washer	1	7670	1403.07	Washer	4
1941	1501.29	R.V. Seat	1	7729	1507.13	Roll Pin	1
2011	1504.02	Suction Seat	1	*7733	1518.05	Control Unit Ball	1
				*7734	1518.06	Outlet Ball	3
				7745	1531.03	Control Selector	1

* Parts Included in Repair Kit #SB-3/KIT